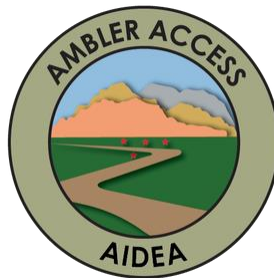


[View this email in your browser](#)



Ice Monitoring Notification

April 27 - May 29

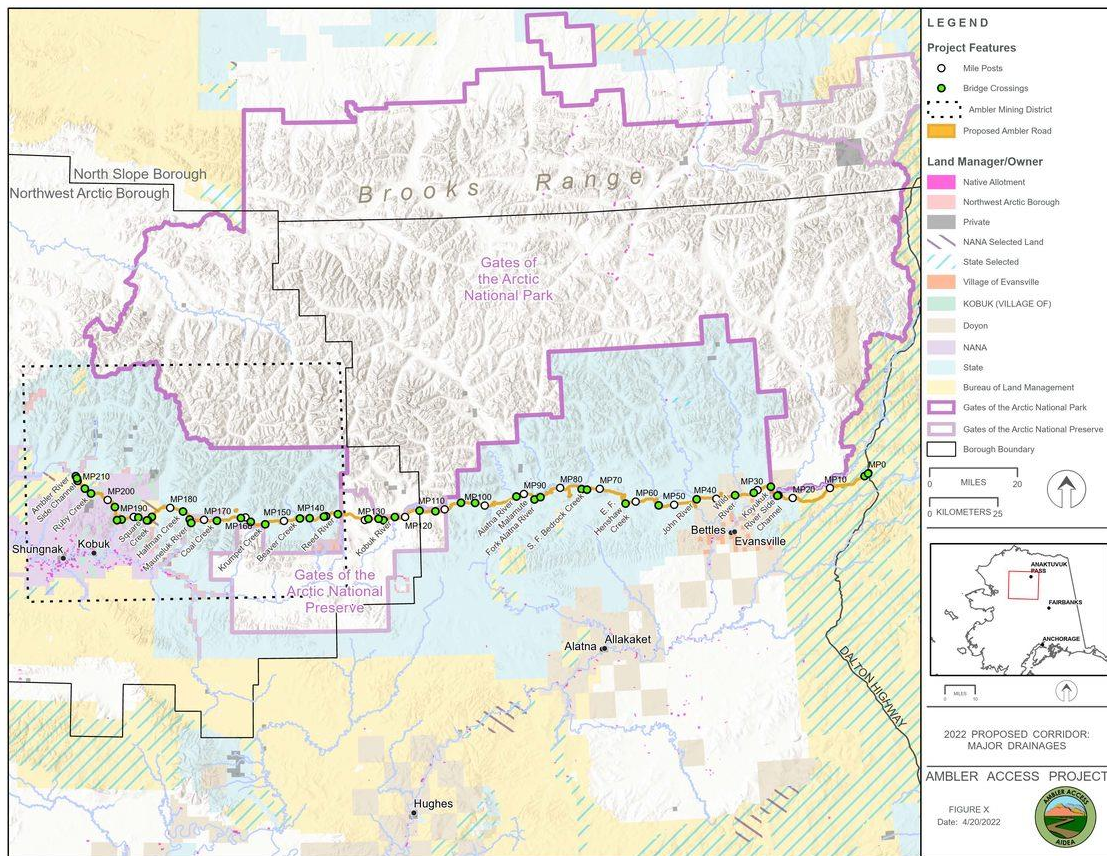
The Ambler Access Project Team will be conducting seasonal ice breakup monitoring in Northwestern Alaska from **April 27th – May 29th between 6am and 10pm.**

What's Happening?

A project helicopter will fly over rivers and side channels to review ice conditions and collect data. The helicopters will *not* be landing at the rivers, but merely will be monitoring ice conditions in the area. Ice observations over rivers and side channels may include: Beaver Creek, Krumpet Creek, Square Creek, Halfman Creek, Huffman Creek, Coal Creek, S.F. Bedrock, E.F. Henshaw Creeks, John, Alatna, Kobuk, Reed, Mauneluk, Kogoluktuk, Shungnak, Wild, Koyukuk, and Ambler Rivers.

Every precaution will be made to avoid potential noise in subsistence areas.

Any questions or concerns, please contact Charlene Ostbloom at costbloom@ambleraccess.org or 907-590-9301.



About the Ambler Access Project

The Ambler Access Project (AAP) is a proposed 211-mile, controlled industrial access road that would provide access to the Ambler Mining District in northwestern Alaska. The area currently lacks the transportation infrastructure necessary for the development, construction, and operations of potential mines in the district. The Ambler Mining District is a large, prospective copper-zinc mineral deposit with extensive deposits of critical minerals and other elements making this a secure, reliable US supply-chain resource essential for our nation's tech-focused economy, green energy products, and military effectiveness. Developing the mines within the district is expected to provide employment opportunities for more than 3,000 total jobs during construction and an estimated 1,800 total jobs supporting Alaskan families during operation of the road and associated mines.





Copyright (C) 2022 Ambler Access Project. All rights reserved.
You are receiving this email because you opted in via our website.

Our mailing address is:
Ambler Access Project
813 W. Northern Lights Blvd
Anchorage, AK 99503

[Add us to your address book](#)

Want to change how you receive these emails?
You can [update your preferences](#) or [unsubscribe](#)

Grow your business with  mailchimp